



PPS Introduction for Management

Agenda

- Business Objectives
- System Overview
- PPS Features
- PPS Device Types
- Message Center
- PPS Monitor PC
- Reporting
- Wrap Up



PPS Business Objective

- PPS was designed to:
 - Automate the task of collecting production information
 - To provide real time information on:
 - Operator Work Tasks & Efficiency
 - Machine Utilization/Efficiency
 - Plant Throughput by Item and Customer
- Allowing you to:
 - Identify Production Problems Sooner
 - Improve Accuracy of Data
 - Monitor Business Value of Process Changes
- Answer the question: What is my production rate NOW?



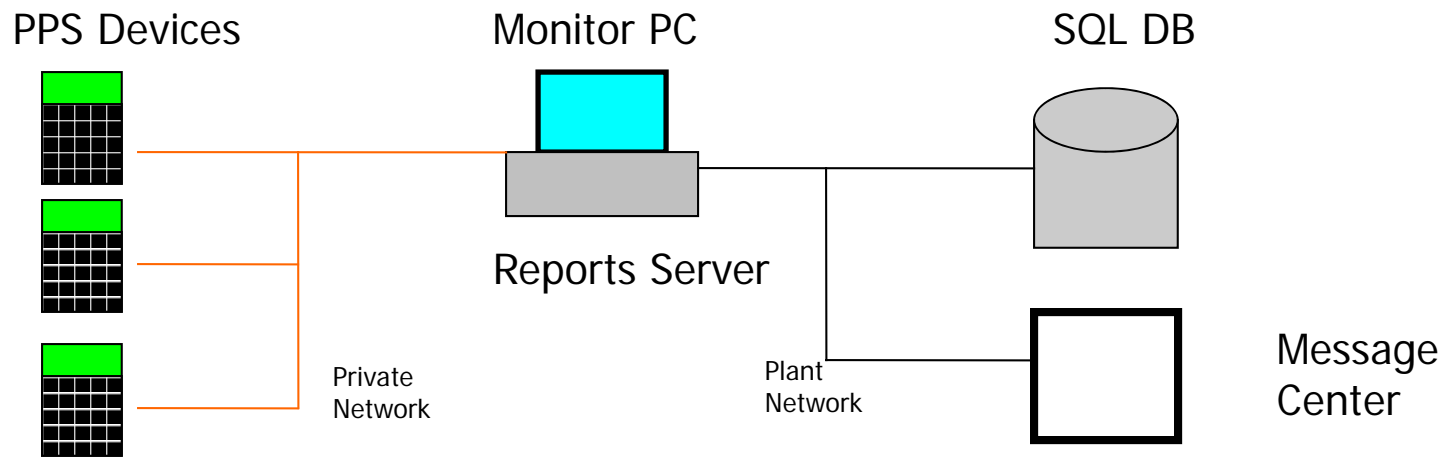
PPS System Components

PPS Devices

Message Center

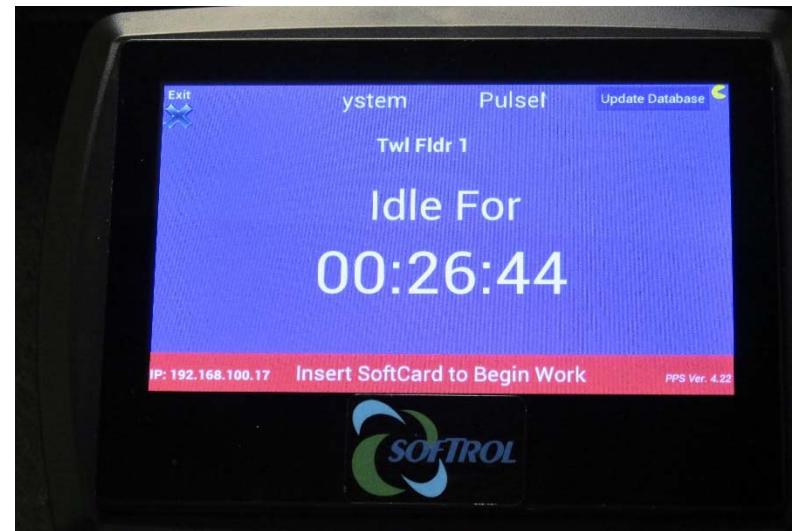
PPS PC

Reports Server with SQL Server DB



PPS Touchscreen

- Stores tasks for work area
- Customer list (optional)
- Collects Operator work history
- 1-3 days worth of storage
- Designed for plant floor



PPS Features

Collects real time production information

Allows instant access to production information. Allowing you to identify production problems and correct them. Thus reducing lost time due to "not knowing" the problem existed

Electronic data acquisition from your plant floor operations.

Reduces the time and number of errors in production data. Thus giving you reliable information to improve your operations

Local storage

Continues to collect data even if network is down

Instant Operator Feedback (Production Pacing Devices)

Allows operators to know if they are working at the correct pace

Automates production reporting by employee, machine or item

The flexible reporting functions of the system allow you to evaluate production against known standards for production. Thus identifying areas which may be reducing overall operation efficiencies.



PPS Features (cont.)

Produces effective production labor reports

The systems comprehensive set of reports will allow you to effectively evaluate each Operators contribution to your business

Multi-Language Support – *English and Spanish*

Ethernet Communications

Flexible configuration of single device

Supports:

1. Individual Tasks
2. Team Tasks
3. Day Work Tasks
4. Manually Measured Tasks
5. Bulk Item Tasks

The system supports virtually any work task that is being performed. Thus giving you the ability to track areas where information is currently hard to track or non-existent.



PPS Stations

All PPS Touchscreen stations are physically the same.

However some specialized stations still use Classic PPS boxes

Externally & internally.

Standard set of connections to allow input from:

Scanners, weigh stations, machine count, mend/stain counts.

Each PPS Touchscreen station has a card reader slot on the left side for one operator SoftCard stations. Classic Boxes on the Right Side

Team boxes support 4 or 8 SofCards for multi-operator tasks.

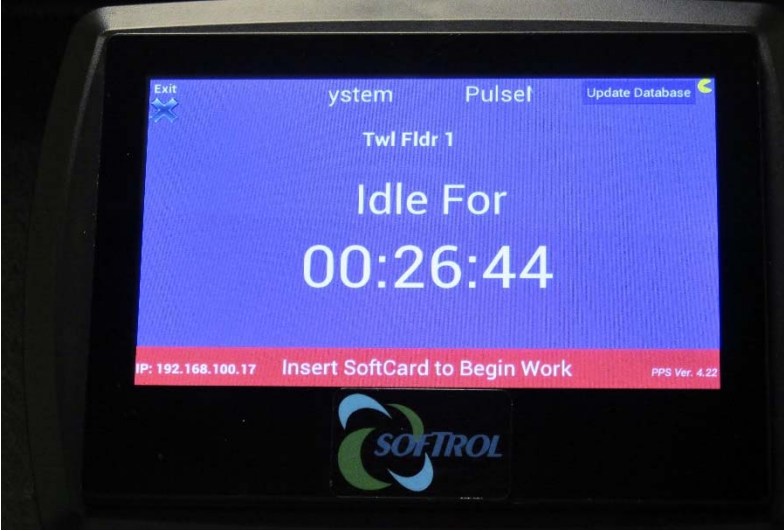
The SoftCard contains:

Name, language preference, current task



The PPS Station

PPS Single Operator Touchscreen



Multi-Card Team Reader



Classic PPS Box May Be Used In Special Applications



Types of PPS Stations

Configured to collect data in different modes:

- Production Pacing Station (Automatic Data Collection)
- Team Production Pacing Station (Automatic Data Collection)
- Department Device Station (Automatic Data Collection)
- Cost Center Station (Daywork & Manual Count Data Collection)
- Bulk Fold Station (Automatic Data Collection)
- Scale Station (Automatic Data Collection)
- Time Clock Station



PPS Production Touchscreen



SCREEN 1

Insert employee SoftCard



SCREEN 2

Scroll either set of tasks to enter the task number



The PPS Production Touchscreen



Touchscreen Shows:

Operator

Station Name

Task

Counts – *Current and Daily*

Efficiency – *Current and Daily*

Pace *Red Screen below 90%*

Yellow Screen 90-100%

Green Screen Over 100%

Basic goal of user: *Keep the Screen Green !*



PPS Single Production Stations

Towel Folding Machine



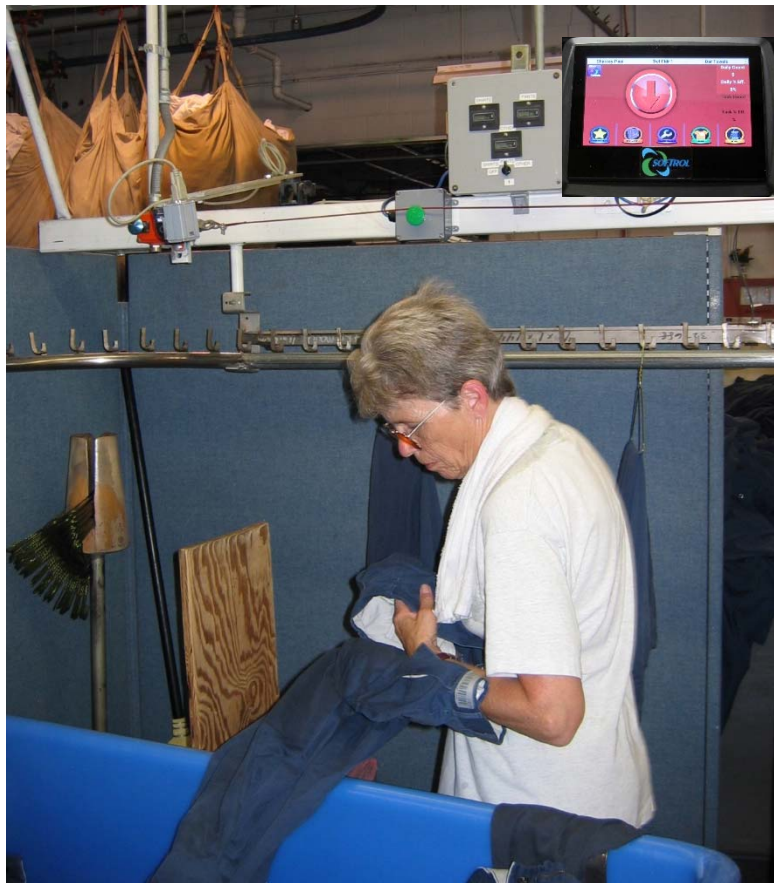
PPS Single Production Stations

Mat Roller



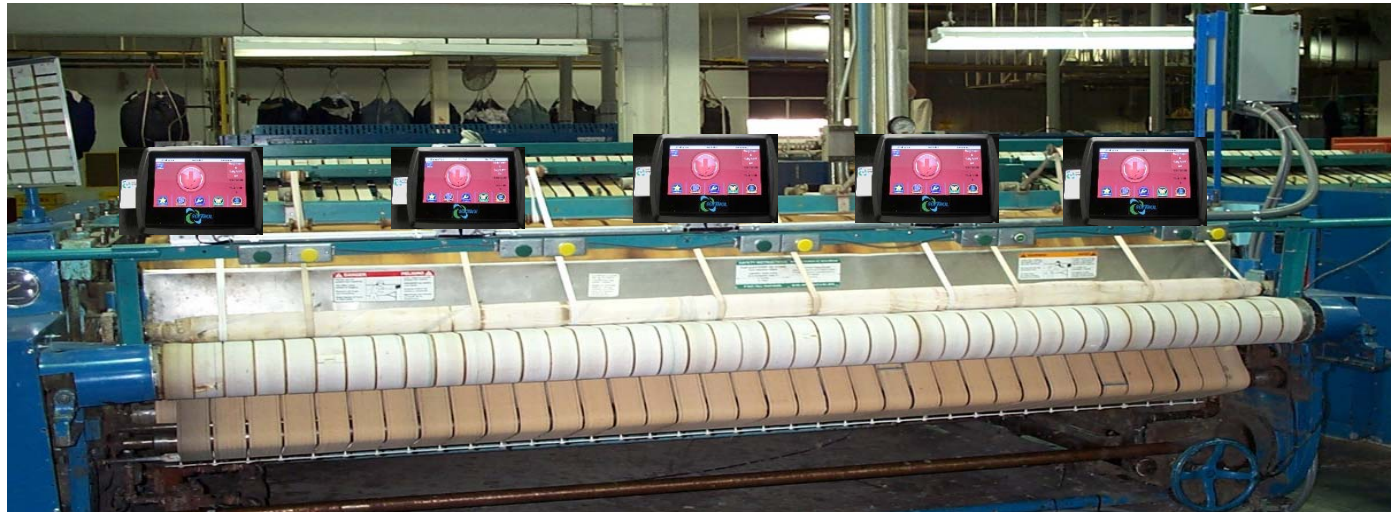
Other PPS Single Production Stations

Garment Tunnel Feed Conveyor Can Have Multiple Stations



PPS Single Production Stations

Multi-Lane Small Piece Ironers



PPS Single Production Pacing Stations

Towel Bagging Station with Scale



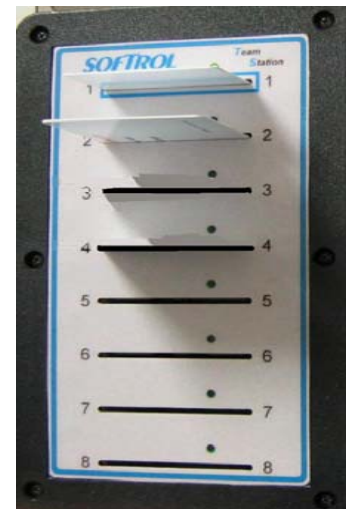
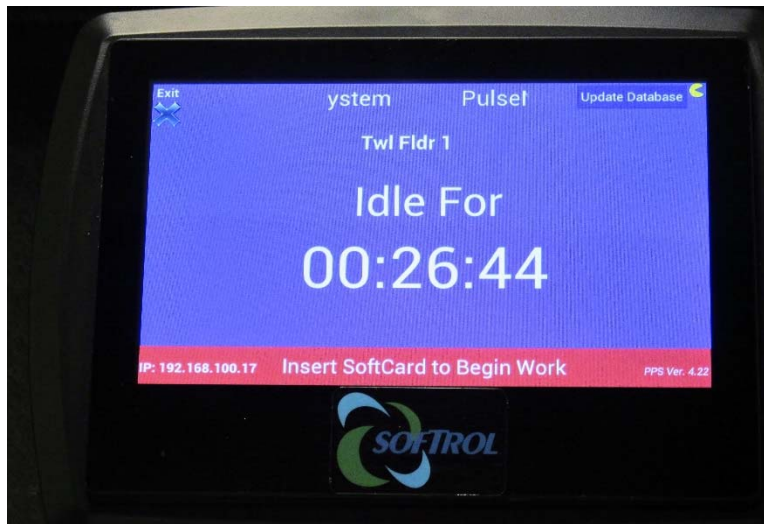
PPS Single Production Pacing Stations

Shirt Press



PPS Team Production Touchscreen

- Team Production Pacing Stations operate the same as Single Production Pacing Stations but are for tasks requiring a team of 2 to 8 operators to perform the task.
- A multi-card reader box is attached to the PPS station that allows all operators on the team to insert their SofCards.



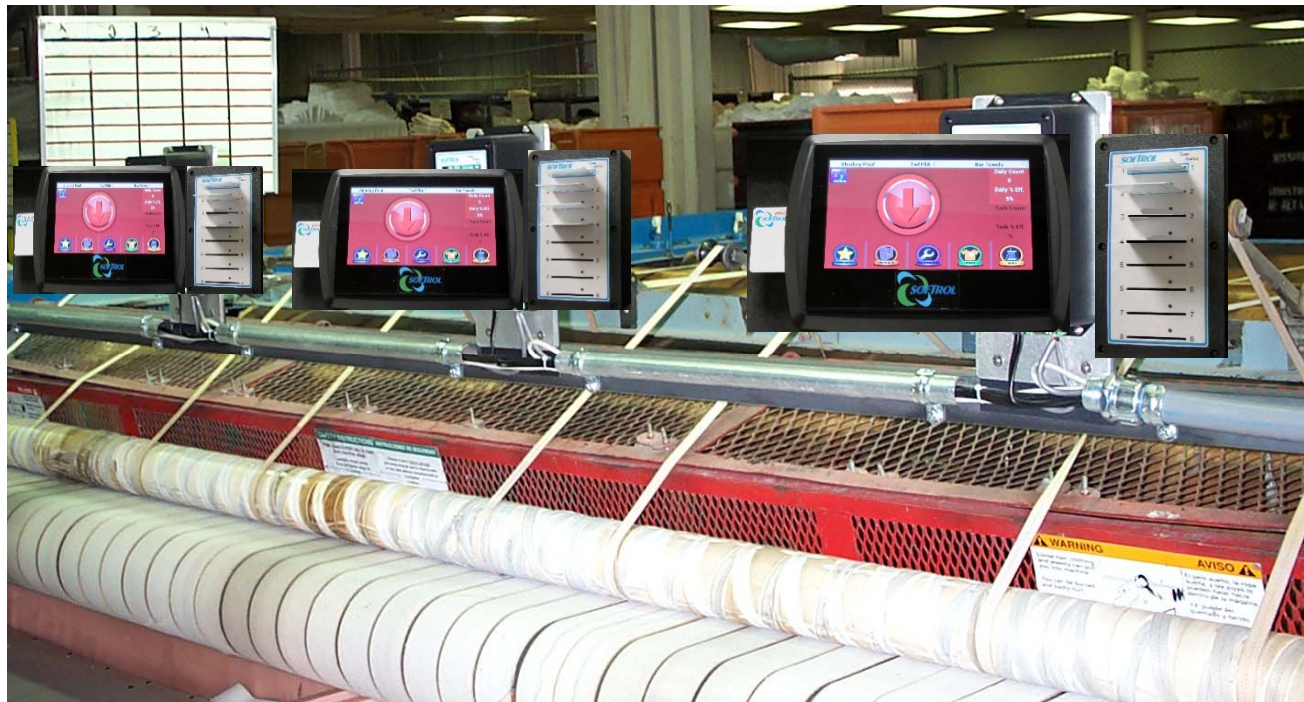
PPS Team Production Stations

Multi-Purpose Flatwork Ironer

Small items (napkins/bib aprons/etc.) in all 3 lanes.

Medium items (table tops/hair cloths/etc.) in the 2 outer lanes.

Large pieces (sheets/table cloths/etc.) in the middle lane.



PPS Team Production Pacing Station

A Sampling of Other Possible Team Stations:

Soil Sort Belt with Hamper Dumper. Up to 8 operators.

Large Piece Ironer - 1 or 2 Lanes.

- Sheets 1 Lane
- Table Linen 1 or 2 Lanes.

Automatic Blanket Folder.

- 1 or 2 Feeders
- 1 or 2 Folders.

*Any Task Requiring More Than One Operator If We Can
Capture A Count Automatically.*



PPS Department Device Station

A Department Device Station is a Team Station where there is only one task possible.

The Operators only have to insert their SofCards into the multi-card reader box for the counts and times to be recorded.

An example of this type of station is an automated sorting system application where:

1 Dept. Device = All Operators 1st Sort

1 Dept. Device = All Operators 2nd Sort

1 Dept. Device = All Tie Out Operators



PPS Cost Center Station

(Daywork and Manual Count Tasks Only)

DAYWORK TASKS are tasks without standards.

We only record the time on these tasks.

MANUAL COUNT TASKS are miscellaneous tasks with standards where we do not capture the counts automatically.

We record the time & the operator enters the counts on these tasks.

ANY NUMBER OF OPERATORS can use a Cost Center Station at the same time as they do not leave their cards in the station after choosing their task.

NO TEAM TASKS. All tasks are single operator tasks.

NO WORK or MAINTENANCE not allowed on these type stations

These stations are located for operator convenience based on the overall plant layout &/or the task locations.



PPS Cost Center Station

(Daywork and Manual Count Tasks)

These stations normally will have a list of possible tasks posted at the station from which the *Daywork or Manual Count Task* can be chosen directly on the PPS Touseen without scrolling for the tasks.

MISCELLANEOUS BULK & FOLDING PPS OPERATIONS

BUTTON #	TASK NAME	
18	Sort Dust Mops	<i>Manual Count</i>
19	Bag Dust Mops	
20	Frame and Bag Dust Mops	
21	Bag Route Bags (Bags of 10)	
22	String Route Bags (Bags of 10)	
23	Wind CRT Towels	
24	Reclaim Hangers (Trees)	
25	Bulk Load Make Up (Route Loads)	
26	Fold ALL Garments	
175	Utility Garment Fold	<i>Daywork</i>
176	Utility Bulk Fold	
178	Janitor	
179	Garment Truck Loading	
180	Garment QC	
197	No Work	



PPS Time Clock Station

Insert SofCard
In Side Of Box

Hit YES To Clock In
NO To Clock Out

Remove SofCard
Start or Leave Work



PPS Bulk Fold Station – Classic PPS Boxes Only

The Bulk Fold station system is a variation of the Team station but is different in how it operates & how the data is collected. Bulk Fold Stations are Classic PPS Boxes not Touchscreens.

- The physical components of the system are:
 - A conveyor belt for moving finished bundles to the tie out station.
 - Up to 8 folding stations located along the sides of the belt.
 - 7 folding stations if the tie out operator does not fold & tie both.
 - Each folding station has:
 - A scanner.
 - A set of task cards with bar codes.
 - Serialized bundle cards with bar codes.
 - A tie out station at the end of the belt with:
 - A PPS box.
 - An attached 8 card reader box.
 - An audit scanner.



PPS Bulk Fold Station



Folding Stations, Scanners & Belt



Folding Station Scanner & Task Cards



PPS Bulk Fold Station



Bundles with Bundle cards On Belt



Classic PPS Box, 8 Card Reader Box, Audit Scanner & Tying Machine At End Of Belt

PPS Scale Station

The PPS Scale Station:

Can be either a Single or Team station.

Is attached to a scale located at:

- A soiled sling lift station.
- A clean sling lift station.
- A soiled hamper/cart weighing station.
- A clean hamper/cart weighing station.

The operator SofCard(s) are placed into the PPS box or multi-card reader box.

A customer(if used) & task are selected after adjusting the tare weight on the scale being used.

The customer & task are selected either:

- As previously described for PPS Single Production Pacing Stations

After the customer(if used) & task are selected, the scale net weight is assigned to that customer & task.



PPS Message Centers

PPS Message Centers:

Are used in areas where several operators can see the screens
 1 to 8 operators per screen layout, screen rotates views if more
 than 8 operators assigned to that message center

Message Center 1		2/4/2015 9:44:41 AM		
JON H	SoilSort 5 Soil Belt L	107%		112%
RODDEY H	SoilSort 5 Soil Belt L	107%		112%
YVETTE L	SoilSort 5 Soil Belt L	107%		113%
ED W	SoilSort 5 Soil Belt L	107%		118%
EDDIE W	SoilSort 5 Soil Belt L	107%		112%
DANIELLE G	SoilSort 5 Soil Belt R	105%		117%
RODDEY H	SoilSort 5 Soil Belt R	105%		112%
ANDREW L	SoilSort 5 Soil Belt R	105%		143%

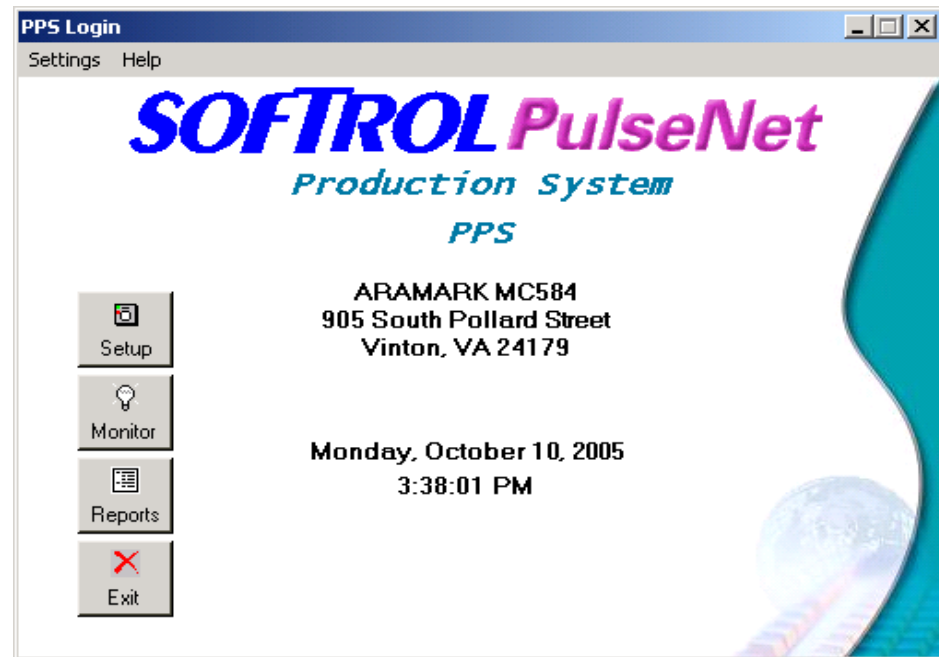


PPS Program on PPS PC

Administration Point For:

- Tasks
- Customers
- Employees
- Business Configuration
- PPS Device Config.

- Monitors PPS Devices
- Collects Information
- Run Reports



PPS Reports

Web Based
Extensive
Summaries





Administrator

PulseNet Production System

[Home](#) | [Log Out](#)

Plant Level Reports

Management Report for Labor	This is a weekly report which shows a high level summary of plant efficiency.	?
Daily Plant Production Summary	The production summary for the plant, lists productive and non-productive tasks performed.	?
Pieces & Pounds Report	Shows total production for a period by pieces and pounds.	?

Dept/Cost Center Reports

Cost Center Summary, By Device	Shows a summary of tasks performed in a cost center broken down by PPS device.	?
Invoer Audit Report	Shows Pieces versus Feeder Pieces.	?
Cost Center Week Summary	Shows production by week for cost centers.	?
Daywork Summary Report	Shows Daywork tasks which were performed.	?
Machine Maintenance Review	Views a summary of the time machines were in maintenance tasks and the operator involved.	

Operator Reports

Employee Productivity Summary	One Line Summary of Employee Productivity.	?
Daily Operator Performance Summary	Shows the detailed work analysis for an individual operator's productivity.	?
Time Clock Review	Review Time Clock Records.	
Review Employee Records	Look up employees and display or change employee records. Add work history records.	

Current Status

View Message Center	Select and display information which is shown on Message Centers.
Check Open Time Clock Records	Check for open time clock records. These are automatically closed by an overnight process.
Current Operators	View the a list of current operators of the system.
PPS Graphical Status	Graphical Display of Current operators. Click on operators to show additional information.

System Setup Information

Cost Center Task List	Shows Tasks which are defined to the PPS system.
---------------------------------------	--

Administration Options

User Administration	Use this link to manage users of the PPS system.
Budgeted, Non Productive Time Setup	Use this link to set up the planned non-productive time for employees.
Message Center Setup	Use this link to configure how the site message centers are configured to display information.
Text Message Setup	Use this link to set up any special messages to be displayed on the Message Centers.
Production Shifts	Set Production Shifts.

Diagnosis

View PPS Device Records	Use this link to view detailed records recorded by the PPS Devices.
---	---

[Report Setup](#)

PPS Summary

Extensive data collection system which enables you to monitor:

Employees

Equipment

Production throughput

In real time

Feedback available to the Employee, Supervisor, Cost Center Manager,
Plant Manager Levels

On line reporting (web based)

Can be configured to monitor just about any task

Equipment independent

Value from the moment you turn it on

